

CT DEEP **2018**
FISHING REPORT NUMBER 10
6/28/2018



Largemouth Bass (*Micropterus salmoides*)



YOU CAN FIND US DIRECTLY ON FACEBOOK. This page features a variety of information on fishing, hunting, and wildlife watching in Connecticut. The address is www.facebook.com/CTFishandWildlife.



INLAND REPORT

Providers of some of the information below included Captain Morgan's Bait & Tackle, Bob's Place (Dayville) and CTFisherman.com, and a number of bass fishing clubs & organizations.

LARGEMOUTH BASS fishing continues to be fair to good. Places to try include Beach Pond, Beseck Lake, Quaddick Lake, Glasgo Pond, Mudge Pond, Candlewood Lake, Bantam Lake, Hopeville Pond, Rogers Lake, Lake Quonnipaug, Pattaconk Lake, Pachaug Pond, Park Pond, Winchester Lake, Salmon River Cove, Lake Hayward and Rogers Lake. With the upcoming heat wave, early morning and the evening/night should so well with the daytime slowing.

Tournament angler reports are from Amos Lake (fair action but great size, with a 5.6 lb lunker and an average fish weight of 3 lbs apiece), Beach Pond (fair to good for most, with a 3.48 lb lunker but not much else for size), Long Pond (fair to good for most, with a 4.1 lb lunker), Mansfield Hollow Reservoir (fair, with a 3.55 lb lunker), Pachaug Pond (a slow bit at times, but a lot of 2-3 lb fish in bags, with a 3.93 lb lunker and an average weight of 2.4 lbs per fish for one club, an earlier club found the same bite, with a 4.4 lb lunker and less overall size), Pickerel Lake (fair, not much for size with a 1.95 lb lunker), Candlewood Lake (fair for most, good for a few, with an **AWESOME 8.11 LB LUNKER**), Highland Lake (fair to good fishing at night, with a 4.35 lb lunker and an average weight of 2.3 lbs per fish, tougher for a daytime club, with a 3.91 lb lunker) and Lake Lillinonah (fair to good, 5.07 lb lunker).

SMALLMOUTH BASS. Lake and pond smallmouth action has been slowing. Some action reported from Candlewood Lake and Lake Lillinonah. With temperatures really warming up for this weekend and next week, Housatonic River smallie action should really pickup for anglers. **Tournament angler** reports are from Beach

One Heck of a Bass!



Doug Cameron of Belchertown, MA (tournament director for North East Bass anglers) with his 8.11-pound Largemouth from Candlewood Lake. Congrats on a great fish!

Pond (a couple for one club), Candlewood Lake (fair at best, 3.41 lb lunker), Highland Lake (a few in the bags) and Lake Lillinonah (slow to fair).

TROUT- RIVERS & STREAMS – Conditions for trout fishing are fair. Water levels have improved greatly and are currently moderately high and variable due to two rounds of heavy, but much needed rain this week. Most streams will moderate towards nicely fishable, but higher than is typical late June levels (see stream flow graphic on page 6) for the weekend.

With a several days in the 90's °F forecast, water temperatures will rise, leading to stressful conditions for trout in some places. **NOTE key thermal refuges are posted to protect the fish through our hot summer water temperatures. Please do not disturb the fish from these areas it could me life or death.**

Good reports from the Farmington River – especially in faster riffles, Salmon River produced 2 great fish (Rainbow and a Brown) for Joe Tkacz, Mill River WTMA in Fairfield, Housatonic River TMA, Merrick Brook WTMA, Fenton River, and Norwalk River TMA.

Farmington River –The weekend looks ok for the Farmington with decreasing flows and clearing water following the heavy downpour on Wednesday (currently 271 CFS at Riverton plus 436 CFS from the Still River at time of press). Water temperatures are now in the upper 50's °F farther downstream of the Still River, and cooler in the Riverton area.

Hatches/patterns. Typical go-to flies this time of year include the Tan and Black Caddis, Vitreus, Sulfurs, Yellow Stonefly, and Blue Wing Olive. Others various activity includes Sulfurs, (Invaria #14-16 hatches mid-day and Dorothea #16-18), Light Cahill (#12-18), March Brown nymphs (#10-14, during the day), Gray Fox (#10-14, afternoon), Blue Wing Olives (#18-24, mid-late afternoon, Midges (#20-32) and Pale Evening Duns (Epeorus vitreus #14-16, afternoon & early evenings).


Housatonic River – Flows increased sharply with a rapid pulse from heavy rain and are now well above typical late June levels, currently 1,870 CFS at Falls Village but only 1,670 CFS at Gaylordsville as the pulse hasn't fully reached Gaylordsville yet (Thursday evening, 6 pm). Flows should drop to more comfortable levels for the weekend. Anglers can call FirstLight Power Resources at 1-888-417-4837 or check the USGS website (<http://waterdata.usgs.gov/ct/nwis/current/?type=flow>) for updated Housatonic River flow information (and also check with a local bait & tackle shop). Morning water temperatures are currently in the low 60's °F. Smallmouth and Fallfish are great options when trout are not willing to bite. Both types of fish are plentiful in the river and super fun on light gear.


Thermal Refuges are Critical to Keep Trout Cool

NO FISHING

WITHIN 100 FEET OF THIS SIGN
JUNE 15- SEPTEMBER 15

See Connecticut Angler's Guide for more information.



 Connecticut Department of Energy & Environmental Protection
Bureau of Natural Resources - Fisheries Division
www.ct.gov/deep/fishing

To Report Fishing Violations
Call: 1-800-842-4357

Anglers are reminded that the thermal refuge areas on the Housatonic, Naugatuck and Shetucket Rivers are now closed to fishing (as of June 15). These areas will reopen on September 15. There is no fishing within 100 feet of signs indicating such closure at or near the mouths of tributaries to these rivers.

Hatches/patterns. Alder Flies (Actually a type of Caddisfly) are the go to fly with good all along the river, Black Caddis (#10-12) March Brown (#10-12), Sulphurs (#14-18, evening), Blue Wing Olive (#16-18, cloudy days, early morning; spinner fall in evening), Cahill (#14, evenings), Adams (#12-16, evening), March Brown (#10-12, afternoon) and Gray Foxes (#14-16). Green caddis (#14-18, early morning & evening) are on the water. Streamers (such as White/Yellow Zonkers or Woolly Buggers) are good options this week for fishing these higher flows.

TROUT-LAKES & PONDS – It’s been quiet. Places to try include West Hill Pond, East Twin Lake, Saugatuck Reservoir, West Branch Reservoir, Crystal Lake, Highland Lake and Mount Tom Pond. Fish will be deeper now.

CATFISH (CHANNEL AND WHITE) good fishing continues and some more productive areas are the CT River, Stillwater Pond, Mohegan Park Pond, Butternut Park Pond, and Lake Wintergreen.

CHAIN PICKEREL. Doing well with consistent action (they’re still very aggressive). Flashy lures and Rapalas (3-5 inches) along the weed lines will attract them in many lakes and ponds throughout the state, also try shiners and in-line spinners.

COMMON CARP. Steady action in all locations. Lake Zoar, Dooley Pond, Batterson Park Pond, Aspinook Pond and West Thompson Reservoir are good bets for casting your “Boilies”.

WALLEYE. Slow last week. Places to give it a go include Squantz Pond and Mount Tom Pond just after dark for walleyes, also some fish were being caught at Lake Saltonstall and Coventry Lake. We recommend fishing along the ledges and drop offs with 3-5” chartreuse plastics. Especially under the Strawberry/Buck moon.

NORTHERN PIKE. Good to very good fishing in Lake Lillinonah and Mansfield Hollow Reservoir. Some catches also reported from Pachaug Pond and Hopeville Pond and of course the Connecticut River.

PANFISH. Some “dinner plate” White Perch are being found in Candlewood Lake (also Yellow Perch at 20 feet). Bluegill are becoming more active following the post-spawn.

CONNECTICUT RIVER Flows remain way below June levels (4,780 CFS) and some anglers report difficulty boating in some parts of the river above the Bissell Bridge. With the sudden high volume of rain, some tributaries will be very muddy and some debris could be washing into the river. **LARGEMOUTH BASS** are providing action in the coves from just below Hartford to Haddam. **CHANNEL CATFISH/WHITE CATFISH** are picking up and providing some 4-6 pound fish throughout the Connecticut River from below Hartford to Haddam. **COMMON CARP** are still providing some good action from Middletown downstream to Salmon River Cove. **BOWFIN** (not snakeheads) catches are steady in the backwaters and side coves – watch out for the teeth!

INLAND REPORT (Reported by You).

Thank you to the following for adding to our Fishing Report this Week. **INLAND REPORT: Andrea Nivolo, Kenny Ludwig, Rick N., Mike Dynia, Rick Dikulas, Jeff Cerritelli, Todd Wiley, Peter S. Long.**

MARINE REPORT: Tom Danilowicz and Kelvin Camis

ZEBRA MUSSELS REMINDER

Zebra mussels are now found in a number of locations scattered throughout the Housatonic River and its impoundments including Lake Lillinonah (since 2010), Lake Zoar (since 2010) and Lake Housatonic (since 2011).

Prior to their discovery in Lakes Lillinonah and Zoar in 2010, zebra mussels had been found (1998) in CT only in East Twin Lake and West Twin Lake (Salisbury). Anglers fishing in any of these waters and western Connecticut in general **should use extra care to avoid transporting water, aquatic vegetation, and possibly zebra mussels to new locations.** Information

For more information including precautions that should be taken to prevent the spread of zebra mussels to additional waters, visit www.ct.gov/deep/invasivespecies or the Aquatic Invasive species section of the 2018 CT angler’s Guide(www.ct.gov/deep/anglersguide).



Notable Catches Reported: Smallmouth (4 pounder, 16 incher), Largemouth (1.6, 2.5, 5.7, 3.5 pounders), Lots of Brook Trout, 2 huge Fallfish, Nothing it was very slow.

How Did They Rate the Fishing?

<i>Species</i>	<i>Excellent</i>	<i>Good</i>	<i>Average</i>	<i>Fair</i>	<i>Poor</i>
Trout	2	0	1	0	1
Bass	2	4	2	1	1
Pike	2	0	1	0	0
Walleye	0	0	0	0	1
Channel Catfish	0	0	1	0	0
Panfish	0	0	0	0	0
Common Carp	0	0	1	0	0

What was HOT! Dark soft plastics, top water buzz baits, poppers and spooks, jointed rapala, white wulff, BH stink bug, caddis, yellow egg pattern, blue fox, magnum zara spook, m.s. slammer, 9” custom glide bait, minnows.

What was NOT! Woolly bugger, stoneflies, light colors, everything I tried.

Good or better places to fish included: Candlewood Lake, CT River above the Farmington River, CT River Chester and Deep River, Housatonic River, Farmington River TMA, Willimantic River TMA, Dog Pond, Bantam Lake, Silver Lake.

Fair or worse places to fish included: Lake Housatonic, Lake Zoar, Colebrook River Lake, North Farms Reservoir.

Some key hatches last week: Alder Fly, Dobson Fly, Sulfurs, Blue Wing Olive.

Friendly Angler Advice (unedited):

The evening top water bite has been good especially on overcast days. Focus on weed edges with poppers, buzz baits and spooks. Black senkos have been working well during the evening hours and at dusk. Water is about 76 degrees and most fish are in post spawn mode.
Got out Friday evening for small mouth on CT River North of Farmington. Fishing was fine. We landed and returned 6 smallies, 3 schoolie stripers, and a small 2Lb Pike. Wind made for tough fishing. Low water made it very difficult to get up river and back. Barely enough water to get my 12' tin through. Can not go back there unless water level increases quite a bit.
ran into a bear on the Farmington this weekend
Post spawn Largemouth Bass patterns are in full effect statewide now. Largemouth have been aggressively feeding on large baits from weed edges and around submerged wood & blown down trees. Smallmouth Bass and Pike have both moved to deeper waters but are feeding best earlier and later in the day when the sun's angle is lower.
Colebrook Lake was dead. Perhaps the recent water level reduction?

TROPHY FISH AWARD PROGRAM:

DEEP's [Trophy Fish Award Program](#) recognizes angler skill by awarding a bronze pin for your first trophy fish, a silver pin for your fifth trophy fish, and a gold pin for your tenth trophy fish. Angler of the year is awarded at our annual Trophy Fish Award Ceremony.

To see if your fish qualifies check out the criteria on page 13 of the [Angler's Guide](#). If you have caught a trophy fish be sure to fill out the [affidavit](#) (or print page 12 of the Angler's Guide) and submit the required photo(s) and form to us. Good luck!

FACEBOOK FISH OF THE WEEK:



Angler's Guide Cover Contest We are fishing for your great Angler's Guide cover shot. If you have a high-resolution picture that represents fishing in Connecticut, email your entry to deep.inland.fisheries@ct.gov ATTN: cover shot. All details about the contest, including the entry form are [online](#).

NOTES & NOTICES:

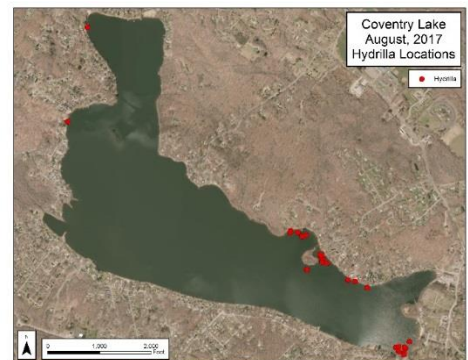
STORM DAMAGE UPDATE. Due to storm damage, the following Connecticut State Parks remain closed:

- **Sleeping Giant**, Hamden. This closure includes the Sleeping Giant TMA on the Mill River (Hamden).
- **Wharton Brook**, Wallingford. This closure includes the Wharton Brook Trout Park.

CANDLEWOOD LAKE (Danbury – fireworks). The annual fireworks display is scheduled for Saturday evening, June 30 in the Danbury Arm. Boaters can expect additional congestion on the lake.

CENTER SPRING POND (Manchester - dredging). A dredging project is beginning at Center Spring Pond. Hydrallic dredging will be used so there'll be no drawdown but access to a portion of the park may be limited.

COVENTRY LAKE (invasive species alert). Hydrilla, a very highly invasive aquatic plant, has been found growing in Coventry Lake. All lake users should take extra care to check and clean their boats (including canoes, kayaks and rowing sculls), trailers, and fishing equipment before leaving the boat launch, or leaving the lakeshore.



Coventry Lake (Wangumbaug Lake) boaters should avoid the areas noted with red dots to avoid fragmenting and spreading hydrilla.

CONNECTICUT RIVER (invasive species alert). In 2016 hydrilla was found in the main stem Connecticut River in Glastonbury (near Glastonbury’s Riverfront Park & Boathouse). **Last year hydrilla was found at other locations along the river including Wethersfield and Crow Point coves and at a site in Enfield.** See the Coventry Lake entry below for what river users should do to prevent spread of this invasive plant to other waterbodies.

FISHERMAN'S FLEAMARKET. Riverton, CT-Saturday JUNE 30th - 9:00 am - 3:00 pm - 2 Main Street. Barkhamsted, CT 06063 (in the lot across from the Riverton General Store)---- Fishing, hunting, camping, boating, kayaking, canoeing anything outdoors, anything camo.... Total outdoorsman's event, full of vendors , full of new, old, vintage, collectible and Antique items. Stop by this event, make a day of it with the guys, bring your gear (or buy some New gear at this event) and fish the Blue-Ribbon Trophy Trout West Branch Farmington River or bring the family as other events will be going on in the little village on this day. **OPEN AND FREE TO THE PUBLIC- Free Admission, Free parking.**

REMINDER TO ANGLERS-

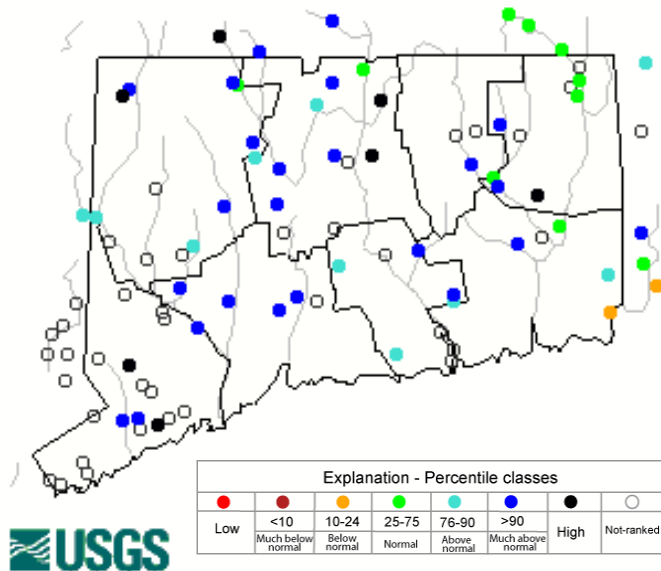
FISHING IN OR CASTING INTO PERMITTED SWIM AREAS IS PROHIBITED.

State regulations prohibit fishing in or into a swim area that has been permitted by DEEP. Additionally, vessels cannot be operated within a permitted swim area, and there’s a 100 foot “no-wake” zone around the perimeter. Swim areas that have been permitted by DEEP will be marked by white buoys with orange markings, and there should be a permit number posted on the buoys. They may or may not have small orange barrier floats to further demarcate the area. Should questions arise concerning the validity of the swim area (*no permit numbers or the area appears to have been changed/enlarged or keeps moving*), please contact DEEP’s Boating Division at 860-434-8638.



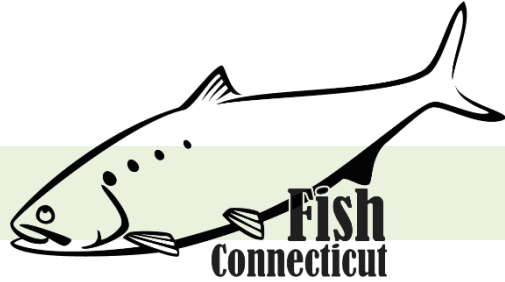
STREAM FLOW CONDITIONS

Thursday, June 28, 2018 19:30ET



Data in the state graphic to the left are generated by the United States Geologic Survey (USGS) and are available on line at: <http://waterdata.usgs.gov/ct/nwis/rt> A percentile is a value on a scale of one hundred that indicates the percent of data in the data set equal to or below it. For example streamflow greater than the 75th percentile means only ¼ of the streamflow values were above the value and thus would be considered “above normal”. Stream flow between the 25th and 50th are considered to be “normal flows” and those 25th or less are considered to be “below normal”.

MARINE FISHING REPORT



Surface water temperatures in Long Island Sound (LIS) are in the 60's °F. Check out the following web sites for more detailed water temperatures and marine boating conditions:

<http://www.mysound.uconn.edu/stationstat.html>

http://marine.rutgers.edu/mrs/sat_data/?nothumbs=1

<http://www.ndbc.noaa.gov/>

<http://www.wunderground.com/MAR/AN/330.html>

Connecticut State Boundary Line in Long Island Sound. Anglers please note: Though Connecticut has reciprocity with neighboring states (New York, Rhode Island, Maine and Massachusetts), residents of Connecticut are required to have a CT Resident Marine Waters or All Waters Sport Fishing License to fish in the Marine District.

SHORE FISHING SPOTS & TIDE TABLE INFORMATION To find a saltwater shore fishing spot close to where you live, go to the following website: <http://www.lisrc.uconn.edu/coastalaccess/>.

For **ENHANCED OPPORTUNITY SHORE FISHING** sites and other fishing information including a site map go to the following website <http://www.depdata.ct.gov/maps/saltwaterfish/map.htm>.

Please see page 64 of the **2018 CT Angler's Guide** for CT tide information.

STRIPED BASS fishing remains good coming off the full moon. It is extremely important to find the pods of menhaden (bait) and fish under them (follow the birds). Shore anglers continue to catch bass in the lower tidal rivers, especially in the evening and at night. There are still plenty of large Striped Bass in the Western Sound, especially off Rye, New York's Playland fishing pier, and in deeper water in 40-70 feet of water. The bite has been awesome from Milford to Greenwich. Dunking chunked Atlantic Menhaden (Bunker) and live-lining American Eels and Menhaden have produced some outstanding specimens, big enough to qualify for the CT DEEP Trophy Fish Award Program. Many Enhanced Opportunity Shore Sites are red hot with Striper action including; Norwalk Calf Pasture, Saint Marys by the Sea, Pleasure Beach Family Pier, Bonds Dock (fish facing I-95 bridge - there's a deep hole in the corner that houses big Bass, off Silver Sands, Short Beach, Walnut Beach and Sandy Point as well as Fort Nathan Hales new fishing pier. Long rubber artificial Eels in pink and black have also proven to attract keeper bass.

Darien to Woodmont catches are also improving daily for anglers using chunk and live bait during the evening/night. **Dawn and dusk is prime time for large stripers on the reefs, rip areas and lower coastal tidal rivers. Live lining eels, bunker or hickory shad has been the ticket.** There is plenty of bunker throughout LIS including the lower tidal rivers to hold fish. Striper areas include the Watch Hill reefs, lower Thames River, the Race, Plum Gut, Pigeon Rip, outer Bartlett Reef, Black Point, **Hatchett Reef**, lower Connecticut River (Great Island), Long Sand Shoal, Cornfield Point, Southwest Reef (outer), Westbrook, Sixmile Reef, Falkner Island area, the reefs off Branford, New Haven Harbor (including Sandy Point), Charles Island area, Housatonic River, buoys 18 and 20 off Stratford Point, Stratford Shoal/Middle Ground, Bridgeport Harbor, Penfield Reef, around the Norwalk Islands, and Cable and Anchor Reef, **Connecticut River by the DEEP Marine Headquarters fishing pier.**

Please use circle hooks when fishing with bait to prevent gut hooking and practice catch & release.

BLACK SEA BASS fishing is very hot this week, especially in the west at Buoy 20, Buoy 18 & the Middleground. Stratford Shoal Lighthouse and nearby Green Buoy "C" along with the Norwalk Islands...has produced the daily limit for many anglers. New Yorks BSB season is now open and anglers are catching them on the New York/CT border off of 6-mile Reef. Most effective has been chumming with Squid and/or Clams and tipping a high-low rig with Clams and Squid. BSB are often swimming with Scup so if you're catching BSB you'll likely be rewarded with several Scup (Porgy). Fishing over any deep water structure (gnarly bottom preferred) in 30 to 110 ft around slack tide will produce some trophy-sized "humpbacks". Fish shallower and you will catch some keeper-sized sea bass along with fluke, sea robins and smooth dogfish (aka sand sharks). It's important to continue to move from structure to structure to find these beautiful and awesome eating fish. Remember, **CT black sea bass regulations are as follows...15 inch min. length, 5 fish daily limit from May 1st to December 31st**. Berkely Gulp (swimming mullet), on a jig along with squid with a spinner works great for these "Bucketmouths".

SCUP (porgy) fishing is very good in Long Island Sound. Like sea bass...they are very abundant. Hook up with your local party/charter boat to get into some of the best fishing ever! High-low rigs loaded with Clams are your best bet and most Enhanced Opportunity Shore Sites are holding schools of scup. But on fire this week is Fort Nathan Hale Pier, Pleasure Beach Pier, The Stratford Wall, Walnut Beach in Milford, Fayerweather Island, Seaside Park, and all the way from shore at Todd's Point in Greenwich to Avery Point. **Rocky Neck State Park**, Harkness Memorial State Park, **Meigs Point Hammonasset**, Sherwood Island State Park and **Fort Trumbull State Park**. Locate your favorite [Enhanced Shore Fishing Opportunities](#) for these hard fighting and excellent eating "Reef Slammers". **These "panfish of the sea" are easily caught on sandworms/cut squid or any other small piece of bait.** Contact your [local bait and tackle shop](#) for updated fishing information. Time to plan a trip on a party/charter boat in CT. [CT Party Boat Association](#).

SUMMER FLOUNDER (fluke) fishing is good in Long Island Sound. Better around Block Island Sound and off Montauk. Mid to western LIS anglers are reporting good numbers of smaller, sub-legal sized fish and a few keepers mixed in, up to 12 pounds. (Darien/Stratford/New Haven/Woodmont/Clinton area). Fishing has been a little spotty in the Western Sound. Your best bet this week is to fish in 15'-40' of water and the deeper the water, the larger the Summer Flounder have been. Charles Island, Todds Point, the Norwalk Islands and Captains Island and Little Captains Island have been good Fluke fishing spots this week. South of Two Trees Island, South of Fishers Island and Plum Gut have been active. You got to put your time in and be mobile moving from spot to spot. Fishing deeper tends to improve your chances for a "doormat" fluke. Other good fluke spots include south shore of Fishers Island (Isabella Beach, Wilderness Point), Watch Hill to Napatree Point, off the Stonington breakwater, mouth of the Mystic River to Groton Long Point, Lower Thames River channel, Gardiners Bay over to Greenport, NY, Twotree Channel, Black Point/Niantic Bay, Long Sand Shoal, Westbrook-Clinton area, Falkner Island area, New Haven Harbor to West Haven, off the mouth of the Housatonic River, Norwalk Islands, and across over to Port Jefferson, NY. Try drifting with a white or pink Bucktail Jig and attach a Berkely 3"- 4" Gulp Mullet in chartreuse, white or pink color. Fresh squid and or silversides (spearing) have also been producing some nice fluke. **Minimum size is 19 inches and the daily creel limit is 4 fish per person.** [CT Bait & Tackle Shop List](#)

BLUEFISH fishing is very good with more and more bluefish arriving as we speak. They can also be found under the pods of adult menhaden found throughout the sound. It's only a matter of time before "alligator" sized blues start to show up. Bluefish activity has been scattered in the Western Sound but trolling Bunker Spoons and drifting long, synthetic Eels has been working well off of Compo Beach, Sasco Beach, Sherwood Island State Park, Seaside Park, Fayerweather Island as well as Pleasure Beach. Blues have also been caught this week at the Norwalk Islands and Middleground. We've had reports of juvenile Bluefish (Harbor Blues/Taylor Blues) at Seaside Park and Silver Sands State Park. The Race, Plum Gut, many of the major rocky reefs, rips, and shoal areas in LIS will harbor bluefish. Speed squidding diamond jigs, trolling parachute jigs or umbrella rigs, and using fresh bunker or hickory shad chunks on three-way bottom rigs have all been effective.

Other bluefish spots include the Sluiceway, Gardiners Bay, Peconic Bays, and the north shore of Long Island along with the Stratford Shoal area. My recommendation is to hook up with a [Party or Charter Boat](#) and enjoy some of the best FISHING you will ever experience. Harbor Blues (15 - 24 inches) are also very common in lower estuaries. Snappers (juvenile bluefish) have not arrived yet!

WEAKFISH fishing is good with 20-34 inch size fish being caught in the east and central sound. Western sound catches are improving as the population rebounds from low abundance. Many are caught while anglers bottom fish for fluke. Good fishing in Niantic, New Haven Harbor by the breakwaters over to Woodmont/Milford Point and along Stratford shoals to Darien. One of the best eating saltwater fish you will ever catch. Weakfish is fairly good from shore at Eatons Neck, NY and at the Rye, NY Playland Pier. They've also been reeled in at West Havens Sandy Point and Sandy Point Audubon Society.

STRIPED SEAROBIN fishing is always good in LIS for this "hardhead fish with spines and large pectoral fins". These beautiful and strange looking fish are now very common especially when bottom fishing at many of Connecticut's shore fishing sites. With many fish measuring over 20 inches, 3 pounds and "barking up a storm" (grunting noise they make when handling them). **They love sandworms, squid and any live or dead bait.** They are also very good to eat. Please be careful when handling them...be mindful of their spines located on top of their head and gill cover.

HICKORY SHAD fishing is ok in the **Black Hall River, Four Mile, Lieutenant and Branford River, lower Connecticut River by the DEEP Marine Headquarters fishing pier and in Clinton Harbor.** These incredible hard fighting fish are on the move...moving up and down river systems. Connecticut Tarpon (Hickory shad) can be found mixed in with schoolie striped bass and harbor bluefish. Flood or the beginning of the Ebb tide is typically the best time and lure choices are a willow leaf (silver or copper), kastmaster (single hook), small plastic jigs (white, red or chartreuse), and or shad darts in various colors. You will be impressed with these "high flyers". Its great shore fishing and you get to meet a lot of anglers and trade fishing stories ("secrets").

WHITE PERCH fishing remains good. Spend some time relaxing in any coastal estuary with a little piece of bait (shrimp/sandworm), enjoying some jumbo white perch. Wow, they are good eating. Perch are found in estuaries, tidal rivers and coves along the Connecticut shoreline. Productive spots include the Pawcatuck River (Stanton Weir Pit/Point), Mystic River, upper Thames River and Niantic River, lower Connecticut River (**DEEP Marine Headquarters fishing pier**), Black Hall River, Lieutenant River, North/South Cove and Hamburg Cove. Grass Shrimp and or a small piece of sandworm fished on the bottom are the keys to success.

Need a fishing spot you've never been to? Want to know details about the site like coordinates? Are there nearby restaurants, is there an adequate amount of parking spaces and more? Just visit the site below, click quest and then on the next screen select the state of Connecticut;

<https://www.st.nmfs.noaa.gov/msd/html/siteRegister.jsp>

BLUE CRAB are becoming active in the tidal creeks and rivers. Crabs are beginning to molt and have now begun mating, becoming more active in the tidal creeks and rivers. With a little time...you can catch a lot of blue crabs of legal size. Also, please remember it's mating season for the crabs and release all egg-bearing females (sooks or lemon bellies). There are some large "jimmies" (male crabs) being captured (8.50 inches spike to spike) along with some impressive sooks (females). **Remember, all egg bearing females must be released without avoidable injury, and the minimum carapace length is 5 inches for a hard shell crab.** Please contact your local bait and tackle shop for most updated information (local hot spots), legal crab traps and bait to use for your fun-filled crabbing. Legal gear types include: scoop (dip) net, hand line, star crab trap, circular (topless) trap not exceeding 26 inches in diameter. Maryland Style Crab traps are prohibited. **Chicken with the skin on it (along with a long handle net) and a small circular crab trap is the preferred method to capture these tasty crabs.** [Blue Crab Fact Sheet](#)

NOTABLE CATCHES –

<i>Species</i>	<i>Length (in.)</i>	<i>Weight (lbs)</i>	<i>Angler</i>
Summer Flounder	30"	12 lbs 6 oz.	Youth
Summer Flounder	26"	7 lbs 1 oz.	Nathan Lowell
Striped Bass	53"	C&R	John K.

IMPORTANT NOTES to ANGLERS:

There have been many reports of **leaping sturgeon** in the lower CT River (Essex to the Old Saybrook) plus a number of fish present in the Enfield/Windsor. These are **endangered fish species (Atlantic and shortnose)**. Anglers are incidentally snagging or catching these sturgeon while bottom fishing. **Please release all sturgeon without avoidable harm as their populations are slowly recovering and are at VERY low levels.** They are a protected species. Thank you.

SHARK SPECIES YOU MAY ENCOUNTER IN COASTAL WATERS OF CONNECTICUT: Anglers may catch Sand Tiger and Sandbar (Brown) Shark which are protected and prohibited species and must be released unharmed. **IF YOU DON'T KNOW, PLEASE LET IT GO!** [Coastal shark information.](#)

For Current Connecticut Recreational Fishing Regulations: Anglers should consult the 2018 Connecticut Anglers Guide which is now available at most Town Clerks Offices, DEEP offices and at tackle stores selling fishing licenses. Current regulations, electronic versions of the Angler's Guide and additional information can all be accessed on the DEEP website at: www.ct.gov/deep/fishing.

PLEASE CALL 1.800.842.4357 TO REPORT FISHING VIOLATIONS.

The Connecticut Department of Energy and Environmental Protection is an Affirmative Action/Equal Opportunity Employer that is committed to complying with the requirements of the Americans with Disabilities Act. Please contact us at (860) 418-5910 or deep.accommodations@ct.gov if you have a disability and need a communication aid or service; have limited proficiency in English and may need information in another language; or if you wish to file an ADA or Title VI discrimination complaint.

DEEP WEEKLY Fishing Report



**Connecticut Department of
ENERGY & ENVIRONMENTAL PROTECTION**

79 Elm Street, Hartford, CT 06106

www.ct.gov/deep