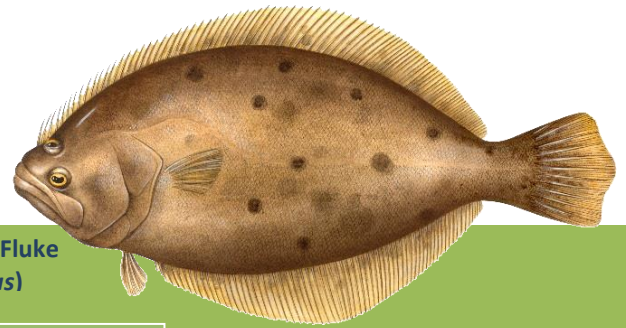


CT DEEP 2018
FISHING REPORT NUMBER 16
8/9/2018



Summer Flounder or Fluke
(*Paralichthys dentatus*)



YOU CAN FIND US DIRECTLY ON FACEBOOK. This page features a variety of information on fishing, hunting, and wildlife watching in Connecticut. The address is www.facebook.com/CTFishandWildlife.

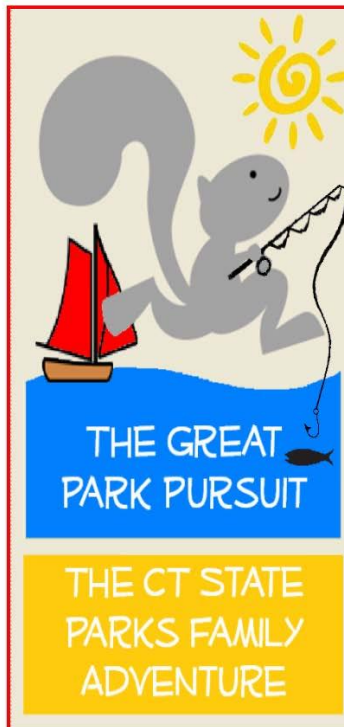
SHARE THE EXPERIENCE
Take someone fishing

INLAND REPORT

Providers of some of the information below included **Bob's Place, Captain Morgan's Bait & Tackle, The Fish Connection, Yankee Outdoors, CTFisherman.com**, and a number of bass fishing clubs & organizations.

LARGEMOUTH BASS fishing remains mostly fair to good in many areas although the heat is keeping some anglers home. Midday is worse, early mornings and nights are better, try black jitterbugs and surface poppers. Places to try include Candlewood Lake (flipping weeds daytime, spinner baits and Jig & pigs at night), Bantam Lake, Mudge Pond, Park Pond, Lake Wononskopomuc, Lake Saltonstall, Bishop Swamp, Highland Lake, Lake McDonough, Winchester Lake, Congamond Lakes, Quinebaug Pond (Wauregan Reservoir), Hopeville Pond, Silver Lake, Black Pond (Meriden), Tyler Lake, Crystal Lake, Billings Lake, Pickerel Lake, Mansfield Hollow Reservoir, Aspinook Pond, Quaddick Lake, Babcock Pond, Pachaug Pond, Lake Hayward and Rogers Lake. Beseck Lake and Mashapaug Lake reported to be slow.

Join us for DEEP's Annual SALTWATER FISHING DAY This Saturday



No Child Left Inside®
in partnership with CARE presents
Saltwater Fishing Day
Saturday, August 11, 2018

10 a.m.-3 p.m.
Fort Trumbull State Park
New London, Connecticut

FREE!
No registration required.
Participants 16 years and older must have fishing license.
Free 1-day license available at www.ct.gov/deep/fishing
Fishing, crabbing, fish activities, fish catching tactics, and more!
Fishing rods, tackle and bait available to borrow.

For more information:
CT Department of Energy and Environmental Protection
(860) 424-3917

Kristen.Bellantuono@ct.gov
or visit www.NoChildLeftInside.org



Tournament angler reports are from Mansfield Hollow Reservoir (fair to good, with a 4.46 lbunker for one club; good for another, with two 4.66 lb lunkers and a 2-lb average fish weight), Pachaug Pond (fair to good for a late day tourney, nice size with fish averaging over 2 lbs apiece and a 4.86 lbunker), Powers Lake (fair to good for most, but not much size, with a 2.43 lbunker and an average weight per fish of barely 1 lb), Quaddick Lake (good for most, with a 3.0 lbunker), Wyassup Lake (7-boat club fished under a 16 inch minimum length,

only one fish per angler, so only 2 fish weighed in, but they were **7.1 lb** and 4.1 lb beauties), and Candlewood Lake (fair for most for a day club, with a 4.52 lb lunger; good for many in a night event).

SMALLMOUTH BASS. Fair to good action reported from Candlewood Lake and Lake Zoar. Some catches also from Colebrook River Lake and Lake McDonough. Tough elsewhere. Good reports for river smallmouth from the upper Housatonic River, also some action on the Quinebaug River and the Naugatuck River. **Tournament angler** reports are from Pachaug Pond (as usual, a few caught) and Candlewood Lake (tough finding fish for one day club, fair to good at night with 5.80 lb, 5.27 lb, 5.14 lb and 5.07 lb smallie lunkers).

TROUT- RIVERS & STREAMS – Conditions for trout fishing have improved some in many areas as rains over the last several weeks continue to refresh flows, and most rivers and streams are currently higher than is typical for early August (see stream flow graphic on page 6). The weather however just continues to be very warm and humid and water temperatures remain warm in many areas. Although it's been mostly slow, anglers might find some trout with dry flies in the deeper pools and cooler riffles on rivers like the Salmon River, Hammonasset River or Natchaug River. The West Branch and mainstem Farmington continues to fish well. Also try some of our Wild Trout Management Areas (these tend to have good cold flow year round) for some wild brookie and brown action. Terrestrial fly patterns are good to include in your offerings.

Farmington River. The upcoming weekend looks good for the West Branch and main stem Farmington with flows down quite a bit from late last week, currently 209 CFS at Riverton plus 158 CFS from the Still River. Flows may continue to drop through the weekend but it's been a bit of a roller coaster ride with flows the last two weeks and some rain is possible over the weekend. Water temperatures range from the upper 50's °F to the upper-60's °F as you move further downstream.

Hatches/patterns. As far as insects go, terrestrials are your best bet. The black, cinnamon and flying ant patterns (especially on hot and humid afternoons). For dry flies it is a diverse set of critters but not in any large hatches. Best advice is have a diversity of size and patterns to hook into that finicky trout. "Mousing" at dusk can put you onto some very large browns. If you have not tried it, give it a go and let us see a pic of your 20+ inch brown.

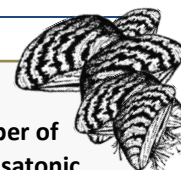
Others for this time of year include Isonychia (#10-12), Vitreus (#16-18, from 5:00 pm to dark, Riverton area), Tan Caddis (#16-18, good all day), Sulfurs, (Invaria #16-18, hatches mid-day and Dorothea #16-18) Light Cahill (#10-14), March Brown nymphs (#10-12), Gray Fox (#14, afternoon), Blue Wing Olives (#18-24, mid-late afternoon), Caddis (tan #14-18, all day; green #22-26, evening), Midges (#20-32), Blue Quill (#16-18) and Pale Evening Duns (Epeorus vitreus #16-18, afternoon and early evenings).

Housatonic River – Flows are headed back up to where they were last weekend (after dropping quite a bit this week). The moderate to high flow is providing lots of water to cover (but is great for the fish). Currently at 1,550 CFS at Falls Village and 2,120 CFS at Gaylordsville. Morning water temperatures are currently in the low to mid 70's °F. With some more rain possible through early Sunday, flows may again increase. Anglers should call the FirstLight Power Resources flow line at **1-888-417-4837** for updated river information or check the

**Saturday
August 11, 2018
IS A FREE
FISHING
LICENSE DAY**

The second 2018 (and final) Free Fishing License Day is Saturday, **August 11, 2018** (and also the day of the NCLI/DEEP CARE program Saltwater fishing event at Fort Trumbull State Park – see page 8 for more information on this event). **Anyone can obtain a free one-day fishing license to fish this day.**

The free 1-day license can be obtained through our mobile friendly site at www.ct.gov/deep/sportsmenlicensing and at the same vendors ([Designated vendor \(tackle shop\)](#)), Town Halls and DEEP offices where other licenses are available ([DEEP Offices](#)).



USGS website at <http://waterdata.usgs.gov/ct/nwis/current/?type=flow> for up to date real time streamflow data from a number of USGS gauging stations including two on the upper Housatonic River.

Smallmouth and Fallfish are great options now that many trout have moved into the thermal refuges. Both types of fish are plentiful in the river and super fun on light gear. Both are taking streamers and poppers. We suggest diversifying a bit and going for Pike and Common Carp – both are very active and are patrolling the shallows. Super large fish that you will never forget.

Hatches/patterns. Waiting on the White Fly hatch as reports indicate it is about to take off (a few popping here and there). All terrestrial patterns near overhanging vegetation seem to be hot. Crayfish imitations and poppers will put you onto some great smallmouth action. Other traditional favorites are Alder Flies (Actually a type of Caddisfly) are the go to fly with good results all along the river, Sulphurs (#14-18, evening), Blue Wing Olive (#16-18, cloudy days, early morning; spinner fall in evening), Isonychia (#10-12 late afternoon & evening, just starting), Light Cahill (#12-14, evenings), Adams (#12-16, evening), March Brown (#10-12, afternoon) and Gray Foxes (#14-16). Black Caddis, and Green caddis (#16-18, early morning & evening). Streamers (such as White/Yellow Zonkers or Wooly Buggers) are good options when the fish are not taking from the surface.

ZEBRA MUSSELS REMINDER

Zebra mussels are now found in a number of locations scattered throughout the Housatonic River and its impoundments including Lake Lillinonah (since 2010), Lake Zoar (since 2010) and Lake Housatonic (since 2011).

Prior to their discovery in Lakes Lillinonah and Zoar in 2010, zebra mussels had been found (1998) in CT only in East Twin Lake and West Twin Lake (Salisbury). Anglers fishing in any of these waters and western Connecticut in general **should use extra care to avoid transporting water, aquatic vegetation, and possibly zebra mussels to new locations.** Information

For more information including precautions that should be taken to prevent the spread of zebra mussels to additional waters, visit www.ct.gov/deep/invasivespecies or the Aquatic Invasive species section of the 2018 CT angler's Guide(www.ct.gov/deep/anglersguide).

Anglers are reminded that the thermal refuge areas on the Housatonic, Naugatuck and Shetucket Rivers are now closed to fishing (as of June 15). These areas will reopen on September 15. There is no fishing within 100 feet of signs indicating such closure at or near the mouths of tributaries to these rivers.

TROUT-LAKES & PONDS. Few reports again this week, but deeper cooler lakes such as Crystal Lake, West Hill Pond, East Twin Lake, Colebrook River Lake and Highland Lake should provide some action (especially mornings).

KOKANEE. Fair to good action trolling in the morning continues at East Twin and with West Hill Pond giving up a few chunky silver bullets.

CATFISH (CHANNEL AND WHITE). Please take our [Catfish Survey](#). Through the survey, we are looking to hear where you fish and what you typically catch. The more productive areas include the CT River in the evening and night, Wauregan Reservoir (Killingly), Mohegan Park Pond and Silver Lake (Meriden). "Chicken Liver" continues to be a good offering.

CHAIN PICKEREL has slowed a bit. The best bets are smaller ponds with a decent amount of emergent vegetation and lilly pads. Toss a weedless rubber worm and jig through the vegetation (hang on).

REMINDER TO ANGLERS-

FISHING IN OR CASTING INTO PERMITTED SWIM AREAS IS PROHIBITED.

State regulations prohibit fishing in or into a swim area that has been permitted by DEEP. Additionally, vessels cannot be operated within a permitted swim area, and there's a 100 foot "no-wake" zone around the perimeter. Swim areas that have been permitted by DEEP will be marked by white buoys with orange markings, and there should be a permit number posted on the buoys. They may or may not have small orange barrier floats to further demarcate the area. Should questions arise concerning the validity of the swim area (*no permit numbers or the area appears to have been changed/enlarged or keeps moving*), please contact DEEP's Boating Division at 860-434-8638.



COMMON CARP. Some 20+ pounders being landed, especially south of Middletown in the CT River and the coves. Other carp favorite water include Lake Zoar, the upper Housatonic River, Batterson Park Pond, Aspinook Pond and West Thompson Reservoir. Pre-Bait your area to bring in plenty of hungry carp.

WALLEYE. Still very few reports for walleye this week. Nighttime is best now, places to try include Squantz Pond, Mount Tom Pond, Lake Zoar, Mashapaug Lake, Cedar Lake and Beach Pond.

NORTHERN PIKE. The Housatonic River in Kent has decent action. Other places to hit include Pachaug Pond, which has great pike but very little fishing pressure in the summer (also try the downstream lakes – Hopeville, Ashland), Mansfield Hollow Reservoir, Winchester Lake, Bantam Lake, Lake Zoar and the CT River.

PANFISH. Perfect time of year to go to your favorite pond and load up on bluegill and perch. While you are at it, bring the family. Fly-fishing with small poppers will provide some great catches. Also, try suspending poppers to catch a few crappie. Looking for a new place to fish? Check out our [interactive mapping application](#).

CONNECTICUT RIVER Flows are still above typical late July levels north of Hartford but have dropped from last weekend (currently 15,500 CFS at Thompsonville) with a fair amount of large debris moving downstream. **LARGEMOUTH BASS** has been on and off. **SMALLMOUTH BASS** fishing in the Windsor-Enfield area (small grey or other light color grubs and live crayfish) has slowed with the higher flows and hot weather slowing anglers. **CHANNEL CATFISH/WHITE CATFISH** is picking up some. **COMMON CARP** were providing some steady action, especially in the Haddam/East Haddam area.

INLAND REPORT (Reported by You).

Thank you to the following for adding to our Fishing Report this Week. **INLAND REPORT: James B., Peter Fitzwell, Kent Moller, Rick N., Ed Natoli, and Anonymous.**

MARINE REPORT: Joe Schnierlein, Paul Hyatt, Dan Baillargeon, Derek Williams, Anonymous.

Notable Catches Reported: Channel Catfish in the 2-3 pound range, 3.25 largemouth, 17” Survivor Brown, 16” Smallmouth, several 20 pound Carp.

How Did They Rate the Fishing?

| Species | Excellent | Good | Average | Fair | Poor |
|-----------------|-----------|------|---------|------|------|
| Trout | 1 | 1 | 1 | 1 | 1 |
| Bass | 0 | 1 | 0 | 3 | 2 |
| Pike | 0 | 0 | 1 | 0 | 0 |
| Walleye | 0 | 0 | 0 | 0 | 0 |
| Channel Catfish | 1 | 0 | 0 | 0 | 1 |
| Panfish | 1 | 1 | 0 | 0 | 1 |
| Common Carp | 0 | 0 | 0 | 0 | 1 |

What was HOT! Chicken Liver, Live Pumpkinseed, Wacky Rig, Egg pattern, Mepps #3.

What was NOT! Worms, Powerbait, Everything, PT, Hares ear, Prince

Good or better places to fish included: Birge Pond, Farmington River, Black Pond

Fair or worse places to fish included: Bolton Lake, Farmington River, Colebrook River Lake, Willimantic River, East Twin Lake.

NOTES & NOTICES:

STORM DAMAGE UPDATE. Due to damage from storms in May, Sleeping Giant (including the Sleeping Giant TMA) and Wharton Brook (including the Wharton Brook Trout Park) state parks remain closed.

BANTAM LAKE (waterski show). The annual Waterski Exhibition will be held this upcoming weekend in North Bay on **Saturday, August 11 from 2:00 pm to 5:00 pm**. Boaters should use caution in this area.

CENTER SPRING POND (Manchester - dredging). A dredging project is ongoing at Center Spring Pond. Hydraulic dredging will be used so there will be no drawdown but access to a portion of the park may be limited.

COVENTRY LAKE (waterski show). A Waterski Exhibition will be held **Sunday, August 12 from 12:00 to 4:00 pm** in the area just to the west (in front of) the boat launch. The launch will remain open for use by public and a lane will available to pass by the water ski area. Boaters should use caution in this area.

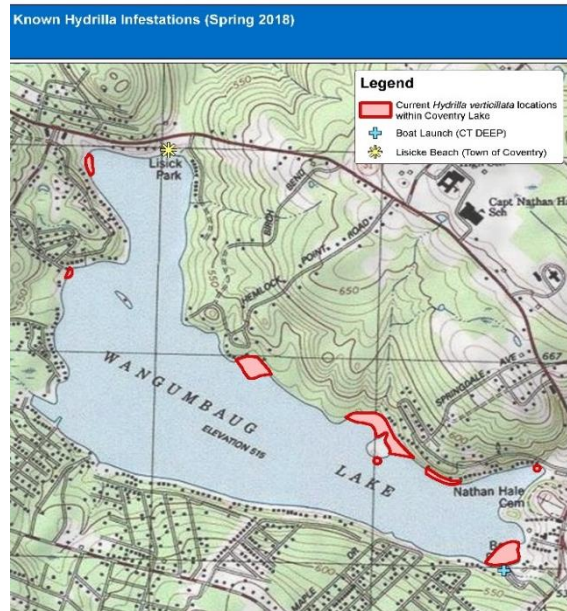
COVENTRY LAKE (invasive species alert). Hydrilla, a highly invasive aquatic plant, has been found growing Coventry Lake. All lake users should take extra care to check and clean their boats (including canoes, kayaks rowing sculls), trailers, and fishing equipment before leaving the boat launch, or leaving the lakeshore.

CONNECTICUT RIVER (invasive species alert). In 2016 hydrilla was found in the main stem Connecticut River in Glastonbury (near Glastonbury’s Riverfront & Boathouse). **Last year hydrilla was found at other locations along the river including Wethersfield and Crow Point coves and at a site in Enfield.** See the Coventry Lake entry below for what river users should to prevent spread of this invasive plant to other waterbodies.

CRYSTAL LAKE (Ellington, swim event). The swim portion of a triathlon will be conducted from **8:00 am to 10:00 am** on **Sunday, August 12**, in the southern end of the lake in front of Sandy Beach.

MUDGE POND (swim event). The swim portion of a triathlon will be conducted from **8:00 am to 9:00 am** on **Saturday, August 11**, in the northern end of the pond, with start and finish at the Sharon Town Beach.

WEST BRANCH FARMINGTON RIVER (invasive species alert). *Cymbella janischii* is a close relative of *Didymo* and has been introduced to the West Branch Farmington River (first noticed in 2011). *C. janischii* is native to the Pacific Northwest and not naturally found on the Eastern seaboard. Currently this type of “Rock Snot” is very abundant and should continue to grow through July. The primary area of the river is from New Hartford upstream to Riverton. Note: *Didymo* is still present primarily in the West Branch above the Still River in Riverton. To help prevent the spread to other rivers and streams, all anglers should take extra care to clean and dry waders that have been in contact with rock snot. We recommend having a pair just for use only in the Farmington River.



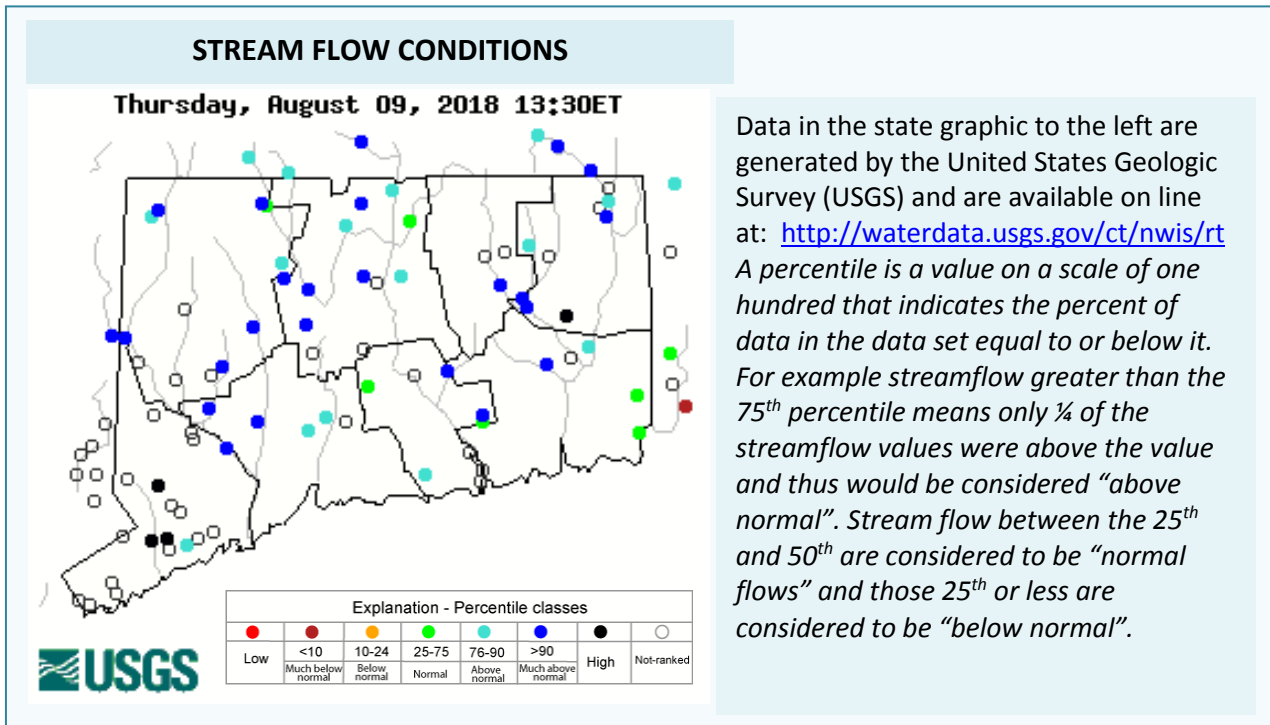
Known locations of hydrilla at Coventry Lake (Wangumbaug Lake). Boaters should avoid these areas noted with red to avoid fragmenting and spreading hydrilla.

pm
state
the

very
in
and

Park

do

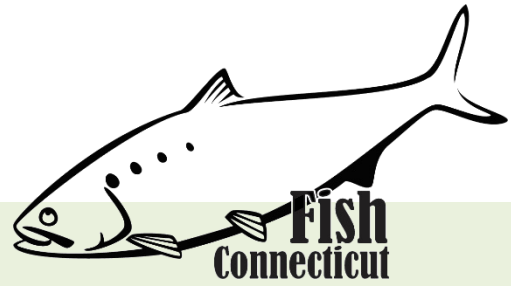


TROPHY FISH AWARD PROGRAM:

DEEP’s [Trophy Fish Award Program](#) recognizes angler skill by awarding a bronze pin for your first trophy fish, a silver pin for your fifth trophy fish, and a gold pin for your tenth trophy fish. Angler of the year is awarded at our annual Trophy Fish Award Ceremony.

To see if your fish qualifies check out the criteria on page 13 of the [Angler’s Guide](#). If you have caught a trophy fish be sure to fill out the [affidavit](#) (or print page 12 of the Angler’s Guide) and submit the required photo(s) and form to us. Good luck!

ANGLER’S GUIDE COVER CONTEST: We are fishing for your great Angler's Guide cover shot. If you have a high-resolution picture that represents fishing in Connecticut, email your entry deep.inland.fisheries@ct.gov ATTN: cover shot. All details about the contest, including the entry form are [online](#).



MARINE FISHING REPORT

Surface water temperatures in Long Island Sound (LIS) continue in the 70's °F. Check out the following web sites for more detailed water temperatures and marine boating conditions:

<http://www.mysound.uconn.edu/stationstat.html>

http://marine.rutgers.edu/mrs/sat_data/?nothumbs=1

<http://www.ndbc.noaa.gov/>

<http://www.wunderground.com/MAR/AN/330.html>

CONNECTICUT STATE BOUNDARY LINE IN LONG ISLAND SOUND. Anglers please note: Though Connecticut has reciprocity with neighboring states (New York, Rhode Island, Maine and Massachusetts), residents of Connecticut are required to have a CT Resident Marine Waters or All Waters Sport Fishing License to fish in the Marine District.

SHORE FISHING SPOTS & TIDE TABLE INFORMATION To find a saltwater shore fishing spot close to where you live, go to the following website: <http://www.lisrc.uconn.edu/coastalaccess/>.

For **ENHANCED OPPORTUNITY SHORE FISHING** sites and other fishing information including a site map go to the following website <http://www.depdata.ct.gov/maps/saltwaterfish/map.htm>.

Please see page 64 of the **2018 CT Angler's Guide** for CT tide information.

SEE A TANGLED TURTLE? CALL THE HOTLINE! 1-860-572-5955 ext. 107. This is the time of year when leatherback, loggerhead, green, and Kemp's Ridley sea turtles return to northern waters, with many sightings around Long Island Sound.

From the Anglers: Squid seemed to be the bait of the week with good to excellent fishing for porgy and sea robins. Blue crabs were hit or miss with some seeing very few and others taking home over 40! (RAK crab traps (ring style) with chicken was the ticket). Striped bass are out there with catches up to 44 inches. Advice "Jig Soft Plastics (Hogy/Cobra Bait Sad Shads) and Live Eels at night, and topwater spooks (247 Lures Mully in white or tequila) work painfully slowly at sunrise/early AM."

Here is a great piece of advice from a fellow angler. "Remind boaters to be respectful of fellow boaters and kayakers. When approaching a rip or hotspot, motor around the structure and drift down current. Boaters quickly motoring over the structure disturbs the fish and fellow anglers. Remind kayakers to ALWAYS wear a PFD."

STRIPED BASS fishing continues to be fair throughout the Sound. One must reef hop and hopefully get 1 or 2 bass on each reef. The nighttime is the right time. They are feeding on the young-of-year menhaden. Fishing should improve around the waning full moon. Bunker (Atlantic menhaden) schools are still in the major tidal rivers and harbors with stripers following close behind. Look for hovering or diving ospreys which is an

indication of bunker (menhaden) schools. The usual striper spots include the Watch Hill reefs, Ram Island Reef in Fishers Island Sound, lower Mystic and Thames River, the Race, Sluiceway, Plum Gut, Pigeon Rip, outer Bartlett Reef, Black Point, the “humps” south of Hatchett Reef, lower Connecticut River, Long Sand Shoal, Cornfield Point, Southwest Reef (outer), Sixmile Reef, Falkner Island area, the reefs off Branford, New Haven Harbor and the upper reaches, Charles Island area, lower Housatonic River, buoys 18 and 20 off Stratford Point, Stratford Shoal/Middle Ground, Penfield Reef, around the Norwalk Islands, and Cable and Anchor Reef. **Dawn and dusk is prime time for large stripers on the reefs, rip areas and lower coastal tidal rivers. Live lining eels, bunker or hickory shad has been the ticket.** Qualify for the [CT Trophy Fish Award Program](#). **Please use circle hooks when fishing with bait (prevent gut hooking) and practice catch & release.**

BLACK SEA BASS fishing continues to be fantastic in the eastern Sound. They are carpeted throughout the bottom of the eastern Sound. Fishing over deep water structure/cobble/gravel in 80 to 120 ft around slack tide will produce some trophy-sized “humpbacks” up to 25 “ on baited jigs or gulp. It’s important to continue to move from structure to structure and fish around slack tide (stay close to the bottom) to find these beautiful and awesome eating fish. They will eat anything you provide them (clams). Fish shallower and you will catch some keeper-sized sea bass along with summer flounder, a lot of sea robins and smooth dogfish (aka sandsharks). **CT black sea bass regulations are as follows...15 inch min. length, 5 fish daily limit from May 19th to December 31st.** Berkely Gulp (swimming mullet), on a jig along with squid with a spinner works great for these “Bucketmouths”. Clams and sandworms also work well.

SCUP (porgy) fishing is awesome. These “Reef Slammers” are measuring 10-18 inches (“hubcap size”) in length being reported at every fishing pier, reef or rock pile in the Sound. Try Gardners Island, Milford (Charles Island), Montauk and Niantic (Bartletts and Hatchetts Reef). Porgy fishing has also been reported at these very accessible shore fishing locations: Calf Pasture beach, Jennings and Penfield beach, Seaside Park, (Milford), Bradley Point Park (West Haven), New Haven, **Harkness State Park**, Rocky Neck State Park, **Kimberley Reef (Guilford)**, Meigs Point Hammonasset State Park and **Fort Trumbull State Park**. Locate your favorite [Enhanced Shore Fishing Opportunities](#) for these hard fighting and excellent eating “Reef Slammers”. These “panfish of the sea” are easily caught on sandworms/cut squid or any other small piece of bait. Contact your [local bait and tackle shop](#) for updated fishing information.

WEAKFISH fishing has surprised many anglers...good catches of “squeteague” are occurring while anglers bottom fish for fluke and sea bass. Good fishing in Niantic (Black Point), New Haven Harbor by the breakwaters over to Woodmont/Milford Point and along Stratford shoals to Darien. One of the best eating saltwater fish you will ever catch and it’s also the state fish of Delaware.

BLUEFISH fishing has improved on the major reefs and rip areas. Vertical jigging diamond jigs or trolling in deep water locations along with fresh bunker chunk baits on three way rigs in shallow water has been the ticket. Typical bluefish fishing spots include the reefs off Watch Hill, the Race, Thames River, Sluiceway, Plum Gut, Pigeon Rip, lower Connecticut River (CT DEEP Headquarters Fishing Pier), Long Sand Shoal, Sixmile Reef, Falkner Island area, New Haven Harbor and upper reaches, lower Housatonic River, buoys 18 and 20 off Stratford Point, Stratford Shoal/Middleground, Penfield Reef, and Cable and Anchor Reef. **SNAPPER BLUEFISH** fishing is improving daily in the tidal creeks and rivers. The DEEP Marine Headquarters fishing pier and **Fort Trumbull fishing pier** are two great spots to bring kids fishing & crabbing. Look for the schools of “peanut” bunker and you will find the snappers.

SUMMER FLOUNDER (FLUKE) fishing is improving with the influx of peanut bunker and snapper blues forcing the summer flounder to feed in shallow water. There have been some big fish caught off Black Point and Six Mile Reef measuring in the 30 inch range being reported. **Fort Trumbull is the shore fishing hot spot...there have been some very impressive fluke (24”) caught there recently.** Summer flounder spots include the south shore of Fishers Island (Isabella Beach, Wilderness Point), Napatree Point and along the beach, off the Stonington breakwater, mouth of the Mystic River over to Groton Long Point, Twotree Island Channel, Black Point/Niantic Bay including the Bloody Grounds, Sound View Beach, Long Sand Shoal, Falkner

Island area, New Haven Harbor, off the mouth of the Housatonic River during the flood tide, and around the Norwalk Islands. **Minimum size is 19 inches and the daily creel limit is 4 fish per person.** [CT Bait & Tackleshop List](#)

HICKORY SHAD fishing is finally starting to get better. Try Fort Trumbull, the Black Hall River, Niantic River, lower Connecticut River by the DEEP Marine Headquarters fishing pier, Clinton Harbor and the lower Housatonic River. Incoming tide is the key...as this species migrates a lot. These "CT Tarpon" providing outstanding/fun shore fishing for anglers. **Tie on a silver willowleaf lure (add a 14-20 inch leader) with a slip sinker above the swivel along with light tackle (6lb test main line).** Cast to current breaks/channels and retrieve the lure and hold on/have fun...

STRIPED SEAROBIN fishing continues to be steady for this "hardhead fish with spines and large pectoral fins". Also, called "**Poor-Man's Lobster**", these fish are very common especially when bottom fishing at many of Connecticut's shore fishing sites. With fish measuring over 22 inches and "barking up a storm" (grunting noise they make when handling them). They love sandworms, squid and any live or dead bait. They are also very good to eat. There are videos on how to clean/fillet these tasty eating fish.

BLACKFISH (TAUTOG) fishing is pretty good this summer. There are plenty of these "Reef Bullies" around the local reefs and pilings. The daily creel limit is 2 fish per person and the minimum size is 16 inches. Tautog love eating crabs and mussels...try green, Asian and hermit crabs for bait. Look for "Togs" over shellfish beds, pilings with mussel beds and rock (reef) piles (10 to 45 ft). **The daily creel limit is 2 fish per person and the minimum size is 16 inches.**

WHITE PERCH fishing continues to impress and is typically better with the incoming tide. These perch are found in estuaries (lower rivers), tidal rivers and coves along the Connecticut shoreline. Productive spots include the Pawcatuck River (Stanton Weir Pit/Point), Mystic River, upper Thames River (**Norwich Harbor**) and Niantic River, lower **Connecticut River (DEEP Marine Headquarters fishing pier)**, Black Hall River, Lieutenant River, North/South Cove and Hamburg Cove. **Grass shrimp and or a small piece of sandworm fished on the bottom are the keys to success.** You can collect grass shrimp with a minnow net along the shoreline where marsh/eel grass is growing or along dock pilings. They love to cling to the grass or dock pilings.

BLUE CRAB fishing is slow in tidal creeks due to the heavy rain. Get out and try your favorite spot and enjoy the scenery and catch some crabs for dinner (crab cakes/sauce). **Remember...all egg bearing females must be released without avoidable injury. Minimum carapace length is 5 inches for a hard shell crab.** Legal gear types include: scoop (dip) net, hand line, star crab trap, circular (topless) trap not exceeding 26 inches in diameter. Maryland Style Crab traps are prohibited. **Chicken with the skin on it (along with a long handle net) and a small circular crab trap is the preferred method to capture these tasty crabs.** [Blue Crab Fact Sheet.](#)
Angler's please also note: It's illegal to snag blue crabs.

SHARK SPECIES YOU MAY ENCOUNTER IN COASTAL WATERS OF CONNECTICUT: Sand Tiger and Sandbar (Brown) Shark are protected and prohibited species and must be released unharmed. **IF YOU DON'T KNOW, PLEASE LET IT GO!** [Coastal shark information.](#)

Need a fishing spot you've never been to? Want to know details about the site, like coordinates? Are there nearby restaurants, is there an adequate amount of parking spaces and more? Just visit the site below, click guest and then on the next screen select the state of Connecticut:

<https://www.st.nmfs.noaa.gov/msd/html/siteRegister.jsp>

NOTABLE CATCHES –

| Species | Length (in.) | Weight (lbs) | Angler |
|-----------------|--------------|--------------|--------------------|
| Summer Flounder | 28" | 8 lbs 3 oz. | Sherrill Mallinson |
| Summer Flounder | 31" | 14 lbs 8 oz. | Robert Herrera |
| Black Sea Bass | 23.5" | 4lbs 10 oz. | Cameron Ravetto |
| Cobia | 33" | 7 lbs | Juan Pagan |

For Current Connecticut Recreational Fishing Regulations: Anglers should consult the 2018 Connecticut Anglers Guide which is now available at most Town Clerks Offices, DEEP offices and at tackle stores selling fishing licenses. Current regulations, electronic versions of the Angler's Guide and additional information is on the DEEP website at: www.ct.gov/deep/fishing. For the latest marine regulations also click this link: [2018 CT Marine Recreational Fishing Regulations](#). **PLEASE CALL 1.800.842.4357 TO REPORT FISHING VIOLATIONS.**



No Child Left Inside®
in partnership with CARE presents
Saltwater Fishing Day
Saturday, August 11, 2018

10 a.m.-3 p.m.
Fort Trumbull State Park
New London, Connecticut

FREE!
No registration required.
Participants 16 years and older must have fishing license.
Free 1-day license available at www.ct.gov/deep/fishing
Fishing, crabbing, fish activities, fish catching tactics, and more!
Fishing rods, tackle and bait available to borrow.

For more information:
CT Department of Energy and Environmental Protection
(860) 424-3917
Kristen.Bellantuono@ct.gov
or visit www.NoChildLeftInside.org




The Connecticut Department of Energy and Environmental Protection is an Affirmative Action/Equal Opportunity Employer that is committed to complying with the requirements of the Americans with Disabilities Act. Please contact us at (860) 418-5910 or deep.accommodations@ct.gov if you have a disability and need a communication aid or service; have limited proficiency in English and may need information in another language; or if you wish to file an ADA or Title VI discrimination complaint.

DEEP WEEKLY Fishing Report



**Connecticut Department of
ENERGY & ENVIRONMENTAL PROTECTION**
79 Elm Street, Hartford, CT 06106
www.ct.gov/deep